



# BE MILES AWAY IN YOUR OWN BACKYARD

Escape to a place where you can relax, recover, and rejuvenate.

## At Viking Spas, we believe we can make a difference.

The power of hot water can create an environment that is serene, peaceful, and calm. A place where you can escape to relax, recover, and rejuvenate. We hope to inspire you to become part of the growing community of hot tub enthusiasts and find your own version of the good life.

### Our Mission

We care about the health and well-being of our customers. A Viking hot tub is a conduit to building healthy relationships - with your own mind and body and with your loved ones. While your mind and body release the stress of the day, you will find yourself more open to connecting and being in the moment with yourself and with your family and friends.

### Our History

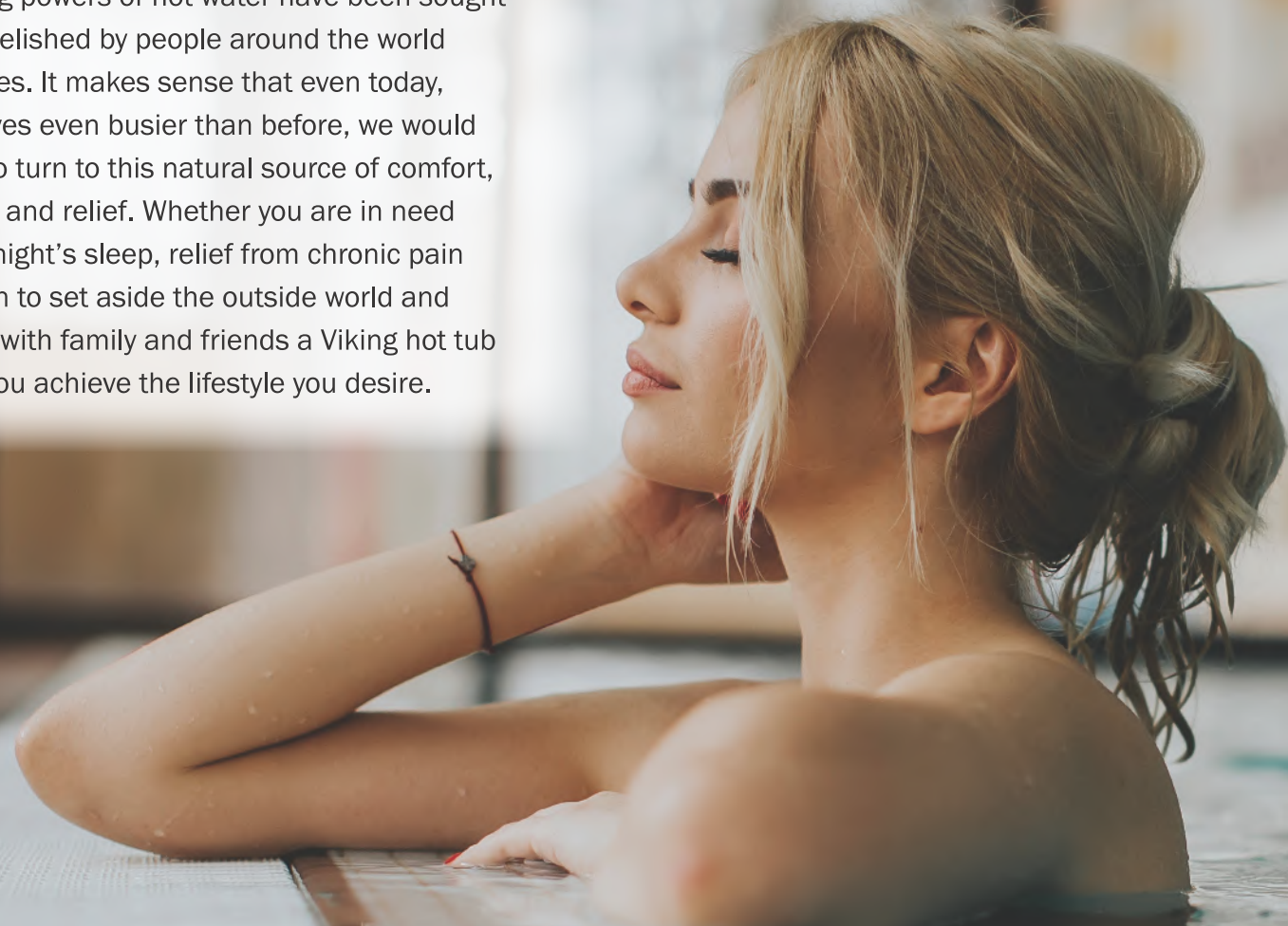
Traced back to the early 1970's, Viking Spas focused on building one hot tub and doing it really well. This third-generation, family-run business is proud of what they have built and are humbled by the relationships they've made along the way.

Quality, therapy, and safety have always been at the forefront of our products, and we are proud that all Viking hot tubs are made in West Michigan, USA.



## Helping you achieve the lifestyle you desire.

The healing powers of hot water have been sought after and relished by people around the world for centuries. It makes sense that even today, with our lives even busier than before, we would continue to turn to this natural source of comfort, relaxation, and relief. Whether you are in need of a good night's sleep, relief from chronic pain or a reason to set aside the outside world and reconnect with family and friends a Viking hot tub can help you achieve the lifestyle you desire.



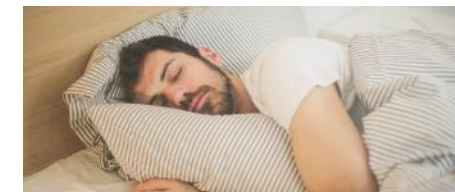
### Hydrotherapy

Hydrotherapy has been around for a very long time, its use can be traced back to ancient civilizations. But the techniques were a little bit different back then – the use of water to treat aches and pains has advanced with time.



### Sleep Therapy

Whether it is insomnia, sleep apnea, or general sleep issues, we can all relate to the challenge of good night's rest. The good news is the hydrotherapeutic properties of a hot tub can positively impact our ability to obtain it.



### Family Therapy

Parents work, kids have school and there never seems to be a time where you can all be in the same place at the same time. When this happens, there is no better therapy session than a quick dip in a hot tub where you can truly unplug.



### Stress Therapy

Studies have shown that hot water can improve circulation and calm the nervous system. In addition to physical relief for pain, hot water can provide much needed relief from the tension and anxiety that comes from stress.



### Arthritis Therapy

Hot water therapy is ideal for someone who suffers from one of the many forms of arthritis. It has the ability to relieve extreme stiffness. This coupled with the massage of a spa's jet system can provide immediate relief from arthritic pains.



## Peace of Mind

Selecting a hot tub from Viking Spas is an easy process. Built with the highest quality components from industry leaders, you can be confident that you will get the best hydrotherapy experience, backed by a company that you can trust.

Viking's exclusive SoftTouch™ shell material offers a slip resistant surface that is unmatched in the industry. Because it is virtually indestructible, we are able to provide a Lifetime Warranty\*. With our unique formulation, Viking keeps your family's safety in mind.

**Soft-Touch**  
SLIP RESISTANT SURFACE

## Make it Your Own

With so many options to choose from you can customize your Viking hot tub to fit all your family needs. Whether its lights and music or advanced jetting and touchscreen controls, mix and match any option to make your experience unique. Even more exciting is that, depending on the model you choose, many options are standard features!



\*See full warranty for details



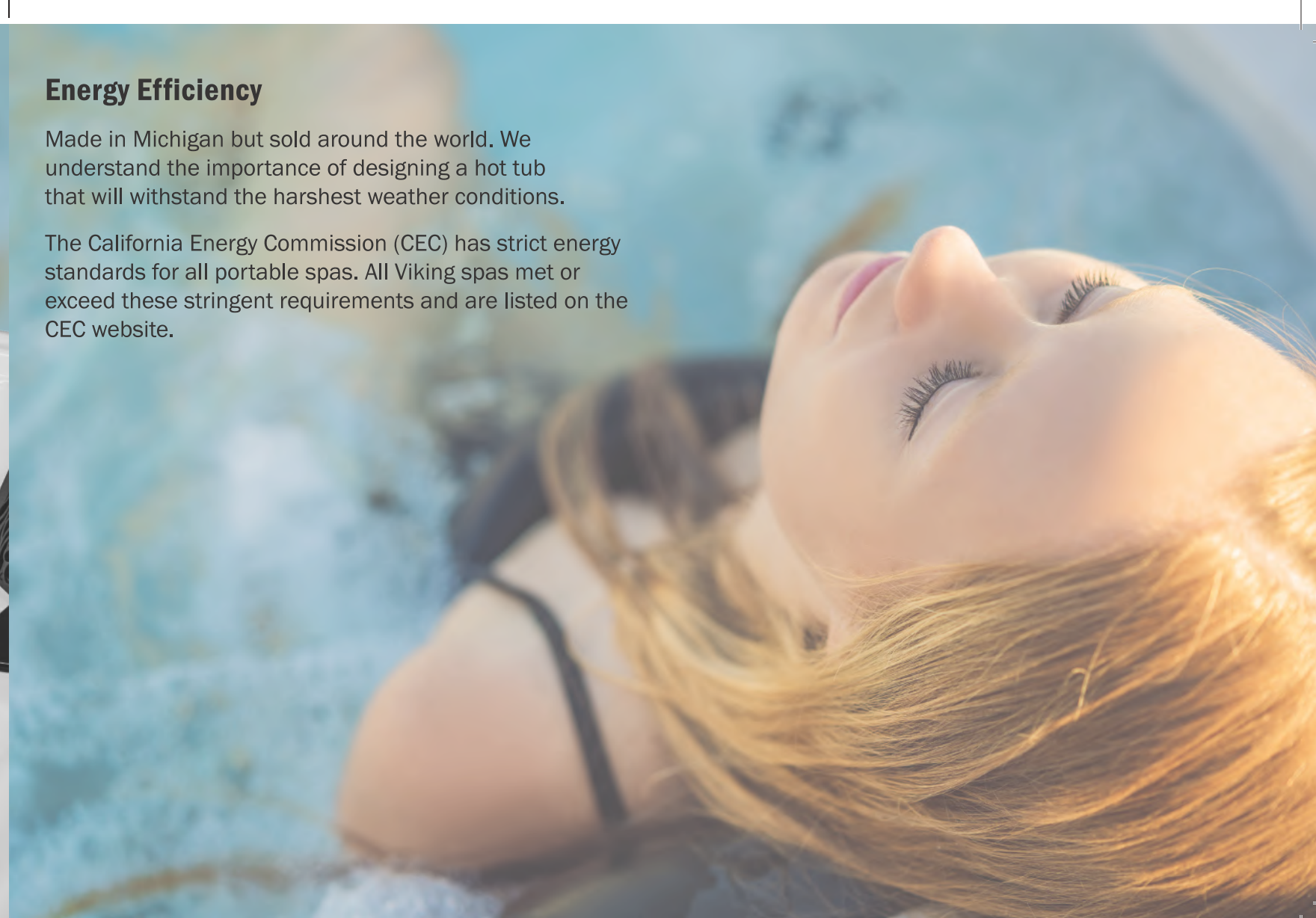
## Comfortable Seating for All Occasions

Whether you're enjoying some alone time or family time, our ergonomic seats provide comfort for all body types. Zero-G loungers, captain's chairs, multi-level and barrier free seating means there's something for everyone.

## Energy Efficiency

Made in Michigan but sold around the world. We understand the importance of designing a hot tub that will withstand the harshest weather conditions.

The California Energy Commission (CEC) has strict energy standards for all portable spas. All Viking spas met or exceed these stringent requirements and are listed on the CEC website.





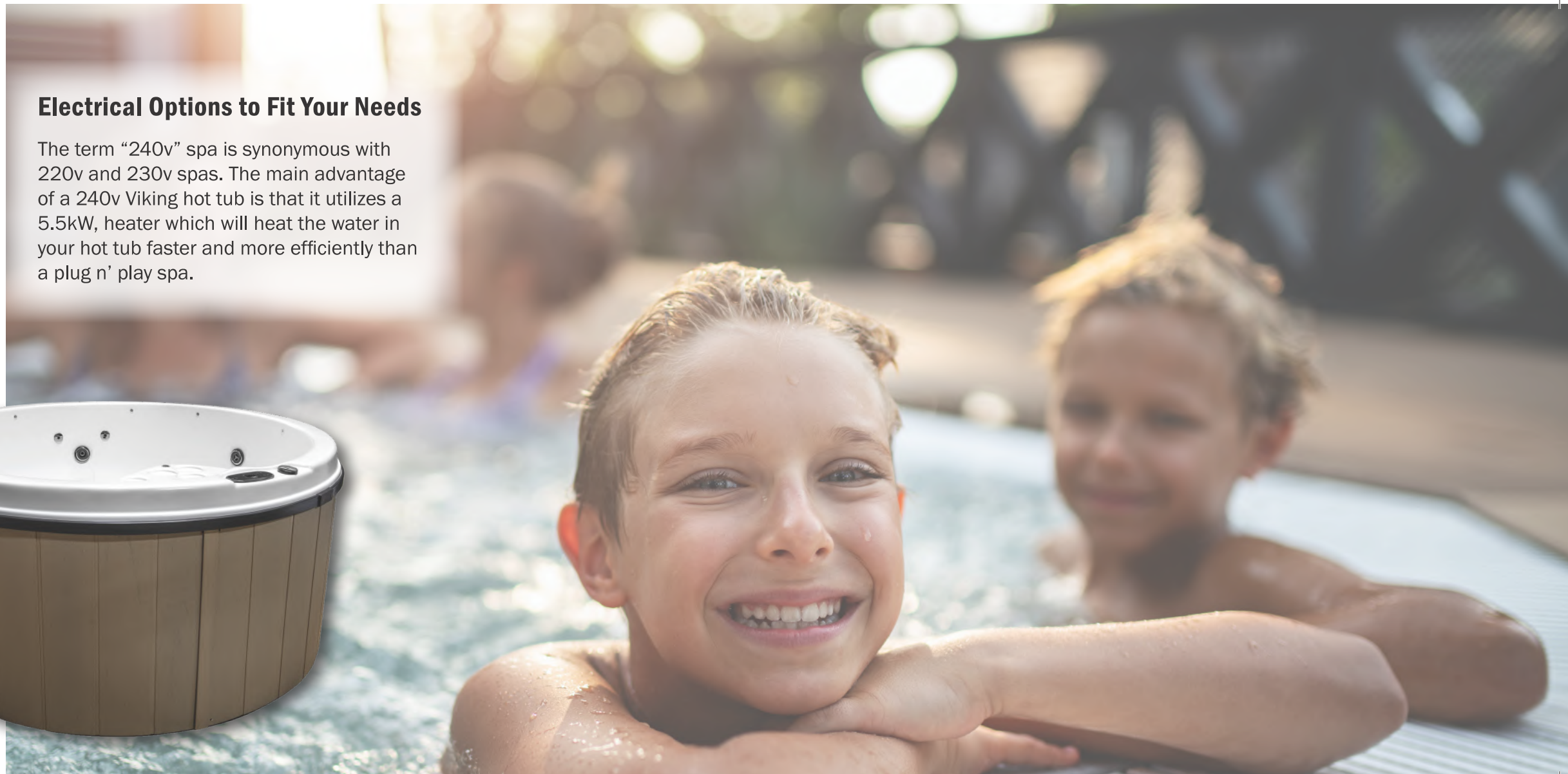
### Electrical Options to Fit Your Needs

The term “240v” spa is synonymous with 220v and 230v spas. The main advantage of a 240v Viking hot tub is that it utilizes a 5.5kW, heater which will heat the water in your hot tub faster and more efficiently than a plug n’ play spa.

### Plug N’ Play Hot Tubs

Our range of plug n’ play spas come with a factory-installed 15-amp GFCI cord. Simply place your hot tub where you want it, fill it with water, then plug it into any standard outlet.

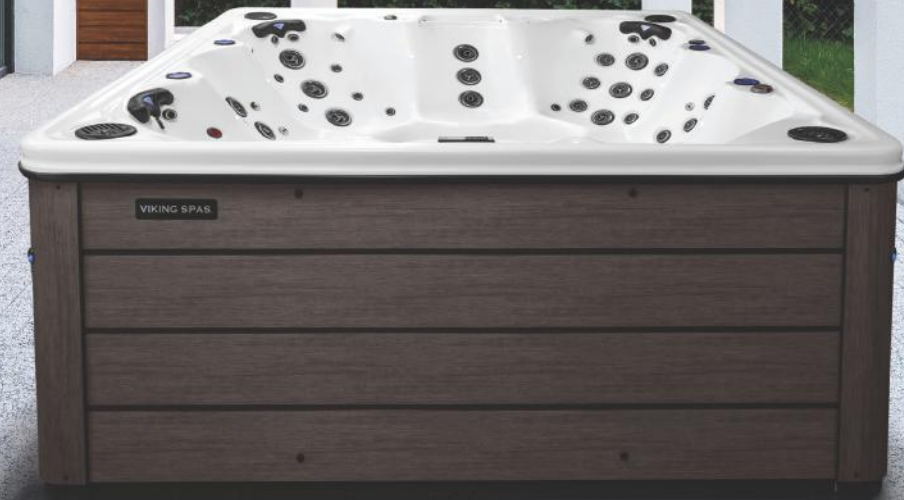
All Viking plug n’ play hot tubs can be converted to 240v.



# ELITE SERIES SPAS

Simply the best we have to offer.

Space and seats for everyone. Generous jetting configurations are strategically placed to provide hydrotherapy just where you need it.



## KEY STANDARD FEATURES

	LEGACY 1	LEGACY 2	LEGEND 1	LEGEND 2	HERITAGE 1	HERITAGE 2	TRADITION 1	TRADITION 2	NOTES
Total Jets	41	51	41	51	61	71	61	71	
1 PUMP, 5 Horsepower	•	-	•	-	-	-	-	-	
2 PUMPS, 10 Total Horsepower	-	•	-	•	-	-	-	-	
2 PUMPS, 12 Total Horsepower	-	-	-	-	•	•	•	•	
Lifetime Shell Warranty	•	•	•	•	•	•	•	•	
Soft-Touch™ Slip-Resistant Surface	•	•	•	•	•	•	•	•	
His-n-Her Captain Seats	•	•	•	•	•	•	•	•	
Three-Directional Swivel Seats	-	-	•	•	-	-	•	•	
Lounger	-	-	•	•	•	•	-	-	
Neck Jets with Comfort Pillows	•	•	•	•	•	•	•	•	
Cup Holders	•	•	•	•	•	•	•	•	
Cascading Water Feature	•	•	•	•	•	•	•	•	
Balboa™ 500 System	•	-	•	-	-	-	-	-	
Balboa™ 502 System	-	•	-	•	•	•	•	•	
5.5kw Heater	•	•	•	•	•	•	•	•	
50 Square Foot Filtration	•	•	•	•	•	•	•	•	
Stainless Steel Accented Jets	•	•	•	•	•	•	•	•	
Volcano Jet	-	-	-	-	•	•	•	•	
Infinintree™ Premium Select Cabinet	•	•	•	•	•	•	•	•	
Resin Floor Constructed Cabinet	•	•	•	•	•	•	•	•	
24 LED Points of Light Including Perimeter and Exterior	•	•	•	•	•	•	•	•	
2lb Density Polyurethane Closed Cell Foam	•	•	•	•	•	•	•	•	Certified to California Energy Commission (CEC) Standards
4" to 2.5" Tapered Density Foam Core Cover	•	•	•	•	•	•	•	•	
Contact Chamber Ozone Injection Sanitizer	•	•	•	•	•	•	•	•	

• Standard ○ Option - Not available. Please consult your local Viking Spa Retailer for details.

# HERITAGE

## Lounge Model

The largest lounge hot tub we have to offer, the Heritage model leaves nothing to chance. From the powerful Volcano floor jet to the neck jets in the two spacious captain's chairs, this model is the ultimate in head-to-toe hydrotherapy. The Heritage is available with 61 or 71 jets.



Heritage 2 shown in Coastal Gray cabinet with matching corners and White Satin shell.

**Dimensions:** 92" x 92"  
**Height:** 37.5"  
**Water Capacity:** 370 gallons  
**Seats:** 6 Adults



**HERITAGE 2**  
**71 Jets | 2 Jet Pumps**  
Shown in White Satin Shell



**HERITAGE 1**  
**61 Jets | 2 Jet Pumps**  
Shown in Silver Satin Shell  
and optional speakers



# TRADITION

## Non-Lounge Model

Our most spacious open-seating spa, the Tradition features two versions of the unique 3D seat with strategically placed jets that give you the option to comfortably lounge across nearby seats. Or sink into one of the generously jetted captain's seats with wrist and neck therapy and take advantage of the powerful Volcano foot jet. The Tradition is available with 61 or 71 jets.



Tradition 1 shown in Black cabinet with matching corners and Opal Satin shell.

**Dimensions:** 92" x 92"  
**Height:** 37.5"  
**Water Capacity:** 430 gallons  
**Seats:** 7 Adults



**TRADITION 2**  
**71 Jets | 2 Jet Pumps**  
Shown in White Satin Shell



**TRADITION 1**  
**61 Jets | 2 Jet Pumps**  
Shown in Opal Satin Shell

# LEGEND

## Lounge Model

Stretch out for a head-to-toe hydrotherapy experience in the Legend model's generous lounger or take advantage of the 3D corner seat with strategically placed jets that let you choose the sitting position that hits just the right spot. Satisfy all your hydrotherapy needs with a 41 or 51 jetted Legend model.



Legend 1 shown in Walnut cabinet with Black corners and Silver Satin shell.

**Dimensions:** 86" x 86"  
**Height:** 37.5"  
**Water Capacity:** 300 gallons  
**Seats:** 6 Adults



**LEGEND 2**  
**51 Jets | 2 Jet Pumps**  
Shown in White Satin Shell



**LEGEND 1**  
**41 Jets | 1 Jet Pump**  
Shown in Silver Satin Shell

# LEGACY

## Non-Lounge Model

Barrier free seating allows you to move easily from each to seat so that you can take advantage of everything the Legacy open-seated model has to offer. It features two roomy captain's seats with generous jetting throughout and calf jets in all four corner seats. The Legacy is available with 41 or 51 jets to fit all your hydrotherapy needs.



Legacy 1 shown in Barnwood cabinet with Black corners and Opal Satin shell.

**Dimensions:** 86" x 86"  
**Height:** 37.5"  
**Water Capacity:** 320 gallons  
**Seats:** 7 Adults



**LEGACY 2**  
**51 Jets | 2 Jet Pumps**  
Shown in White Satin Shell



**LEGACY 1**  
**41 Jets | 1 Jet Pump**  
Shown in Opal Satin Shell

# VIKING SERIES SPAS

## Premium hot tubs at the right price.

Well-appointed models with the hydrotherapy, comfort, and features you need to relax and rejuvenate.



### KEY STANDARD FEATURES

	VIKING 3	AURORA 3	REGAL	REGAL ETS	ROYALE	ROYALE ETS	NOTES
Total Jets	20	31	31	31	31	31	
1 PUMP, 4 Horsepower	•	•	•	-	•	-	
2 PUMPS, 6 Total Horsepower	-	-	-	•	-	•	
Lifetime Shell Warranty	•	•	•	•	•	•	
Soft-Touch™ Slip-Resistant Surface	•	•	•	•	•	•	
His-n-Her Captain Seats	-	-	•	•	•	•	
Three-Directional Swivel Seats	-	-	•	•	•	•	
Lounger	-	•	-	-	•	•	
Neck Jets with Comfort Pillows	-	•	•	•	•	•	
Cup Holders	•	•	•	•	•	•	
Cascading Water Feature	-	•	•	•	•	•	
Balboa™ 500 System	•	•	•	-	•	-	
Balboa™ 502 System	-	-	-	•	-	•	
5.5kw Heater	•	•	•	•	•	•	
50 Square Foot Filtration	-	•	•	•	•	•	Viking 3 Installed with 20 Square Foot Filtration
Stainless Steel Accented Jets	•	•	•	•	•	•	
InfiniTree™ Premium Select Cabinet	-	•	•	•	•	•	Viking 3 InfiniTree Standard Cabinet
12 LED Points of Light	•	-	-	-	-	-	
24 LED Points of Light Including Perimeter and Exterior	-	•	•	•	•	•	
2lb Density Polyurethane Closed Cell Foam	•	•	•	•	•	•	Certified to California Energy Commission (CEC) Standards
4" to 2.5" Tapered Density Foam Core Cover	•	•	•	•	•	•	
Resin floor constructed cabinet	•	•	•	•	•	•	
Contact Chamber Ozone Injection Sanitizer	•	•	•	•	•	•	

• Standard ○ Option - Not available. Please consult your local Viking Spa Retailer for details.

# ROYALE

## Lounge Model

Within the Royale collection of hot tubs in the Viking Series, you will find the perfect configuration to suit your needs. LED lighting and a cascading water feature sets the mood. With a comfortable lounge and two spacious captain's chairs you can take advantage of all the hydrotherapy this spa has to offer.



Royale ETS shown in Walnut cabinet with matching corners and Silver Satin shell.

**Dimensions:** 78" x 78"  
**Height:** 34"  
**Water Capacity:** 270 gallons  
**Seats:** 6 Adults



**ROYALE ETS**  
**31 Jets | 2 Jet Pumps**  
Shown in Silver Satin Shell



**ROYALE**  
**31 Jets | 1 Jet Pump**  
Shown in Silver Satin Shell

# REGAL

## Non-Lounge Model

The collection of Regal models within the Viking series offers barrier-free seating at its best. Featuring two of the unique 3D corner seats, you can choose which angle works best to get the hydromassage you're looking for. With LED lighting and a cascading water feature to set the mood, find the configuration that works best for you.



Regal shown in Coastal Gray cabinet with matching corners and White Satin shell.

**Dimensions:** 78" x 78"  
**Height:** 34"  
**Water Capacity:** 290 gallons  
**Seats:** 7 Adults



**REGAL ETS**  
**31 Jets | 2 Jet Pumps**  
Shown in Silver Satin Shell



**REGAL**  
**31 Jets | 1 Jet Pump**  
Shown in White Satin Shell

# AURORA

## Lounge Model

The Viking series Aurora model is designed for small spaces but can comfortably seat up to three people. Stretch out in the lounge or ease into the captain's chair that will hit the right spot. Big hydrotherapy in a small package!



### AURORA 3

**31 Jets | 1 Jet Pump**

Shown in Coastal Gray cabinet with matching corners and Silver Satin shell.



**Dimensions:** 60" x 84"  
**Height:** 34"  
**Water Capacity:** 210 gallons  
**Seats:** 3 Adults

# VIKING

## Non-Lounge Model

The Viking round hot tub is a classic and provides plenty of room to stretch out or invite a crowd. With plenty of hydrotherapy jets there's not a bad seat in the house.



### VIKING 3

**20 Jets | 1 Jet Pump**

Shown in Coastal Gray cabinet and White Satin shell



**Dimensions:** 72" round  
**Height:** 35"  
**Water Capacity:** 250 gallons  
**Seats:** 5 Adults

# PLUG N' PLAY SPAS

## Plug in and enjoy.

Maximize your budget and your enjoyment with these value-driven hot tubs.



### KEY STANDARD FEATURES

	VIKING 2P	AURORA P	AURORA P+	REGAL P	REGAL P+	ROYALE P	ROYALE P+	NOTES
Total Jets	20	17	21	17	21	17	21	
1 PUMP, 1 Horsepower	-	•	-	•	-	•	-	
1 PUMP, 2 Horsepower	•	-	•	-	•	-	•	
Lifetime Shell Warranty	•	•	•	•	•	•	•	
Soft-Touch™ Slip-Resistant Surface	•	•	•	•	•	•	•	
His-n-Her Captain Seats	-	-	-	•	•	•	•	
Three-Directional Swivel Seats	-	-	-	•	•	•	•	
Lounger	-	•	•	-	-	•	•	
Neck Jets with Comfort Pillows	-	-	•	-	•	-	•	
Cup Holders	•	•	•	•	•	•	•	
Cascading Water Feature	-	•	•	•	•	•	•	
Balboa™ BPI 00 Convertible System 1 20v 1 5amp/240v 40amp	•	•	•	•	•	•	•	
1 kw Heater Convertible to 4kw Heater	•	•	•	•	•	•	•	
50 Square Foot Filtration	-	•	•	•	•	•	•	Viking 2P Installed with 20 Square Foot Filtration
Stainless Steel Accented Jets	•	•	•	•	•	•	•	
InfiniTree™ Premium Select Cabinet	-	•	•	•	•	•	•	Viking 2P InfiniTree Standard Cabinet
24 LED Points of Light Including Perimeter and Exterior	-	-	•	-	•	-	•	
2lb Density Polyurethane Closed Cell Foam	•	•	•	•	•	•	•	Certified to California Energy Commission (CEC) Standards
Resin Floor Constructed Cabinet	•	•	•	•	•	•	•	
4" to 2.5" Tapered Density Foam Core Cover	•	•	•	•	•	•	•	

• Standard ○ Option - Not available. Please consult your local Viking Spa Retailer for details.

# ROYALE

## Lounge Model

Within the Royale collection of hot tubs in the Viking Series, you will find the perfect configuration to suit your needs. LED lighting and a cascading water feature sets the mood. With a comfortable lounge and two spacious captain's chairs you can take advantage of all the hydrotherapy this spa has to offer.



Royale P+ shown in Black cabinet with matching corners and White Satin shell.

**Dimensions:** 78" x 78"  
**Height:** 34"  
**Water Capacity:** 270 gallons  
**Seats:** 6 Adults



### ROYALE P+

**21 Jets | 1 Jet Pump**

Shown in White Satin Shell and optional speakers



### ROYALE P

**17 Jets | 1 Jet Pump**

Shown in Opal Satin Shell

# REGAL

## Non-Lounge Model

The collection of Regal models within the Viking series offers barrier-free seating at its best. Featuring two of the unique 3D corner seats, you can choose which angle works best to get the hydromassage you're looking for. With LED lighting and a cascading water feature to set the mood, find the configuration that works best for you.



Regal P shown in Barnwood cabinet with Black corners and Opal Satin shell.



### REGAL P+

**21 Jets | 1 Jet Pump**

Shown in White Satin Shell and optional speakers



### REGAL P

**17 Jets | 1 Jet Pump**

Shown in Opal Satin Shell

**Dimensions:** 78" x 78"  
**Height:** 34"  
**Water Capacity:** 290 gallons  
**Seats:** 7 Adults



# AURORA

## Lounge Model

The Viking series Aurora model is designed for small spaces but can comfortably seat up to three people. Stretch out in the lounge or ease into the captain's chair that will hit the right spot. Big hydrotherapy in a small package!



**AURORA P+**  
**21 Jets | 1 Jet Pump**  
Shown in Silver Satin Shell



**AURORA P**  
**17 Jets | 1 Jet Pump**  
Shown in Opal Satin Shell



Aurora P+ shown in Black cabinet with matching corners and White Satin shell.

**Dimensions:** 60" x 84"  
**Height:** 34"  
**Water Capacity:** 210 gallons  
**Seats:** 3 Adults

# VIKING

## Non-Lounge Model

The Viking round hot tub is a classic and provides plenty of room to stretch out or invite a crowd. With plenty of hydrotherapy jets there's not a bad seat in the house.



**VIKING 2 P**  
**20 Jets | 1 Jet Pump**  
Shown in Walnut Cabinet and Opal Satin Shell



**Dimensions:** 72" round  
**Height:** 35"  
**Water Capacity:** 250 gallons  
**Seats:** 5 Adults

## MAINTENANCE-FREE PREMIUM CABINET COLORS

Our premium maintenance-free cabinets are standard on all square and rectangle Viking hot tubs. Choose matching corners for a cohesive look or add contrast with black slate corners.



COASTAL GRAY



WALNUT



BARNWOOD



BLACK SATIN



Viking Series Regal model shown in Barnwood cabinet and Black corners.

Choose from two rich colors for any Viking round spa.



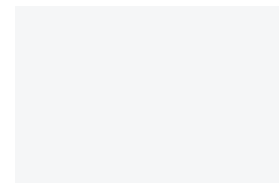
COSTAL GRAY



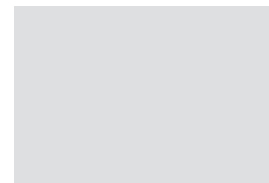
WALNUT

## SLIP RESISTANT SHELL COLORS

Our SoftTouch™ shell material offers a slip resistant surface that is unmatched in the industry.



WHITE SATIN



SILVER SATIN



OPAL SATIN



BLACK SATIN



Elite Series Heritage 2 model shown in White Satin shell.

\*Round spas only available in Opal Satin or White Satin. Black Speck only available for Royale and Legend models.

## SPA OPTIONS

We offer a variety of options so that you can customize your spa for an experience that is unique to you and your family. Some options are standard on select models, please check with your local authorized Viking Spas dealer for availability.



**SPATOUCH CONTROLS**

**AIR X JETTING**



**CD OZONE WATER CARE**



**WIFI MODULE FOR SPA TOUCH CONTROLS**



**PREMIUM STEP**



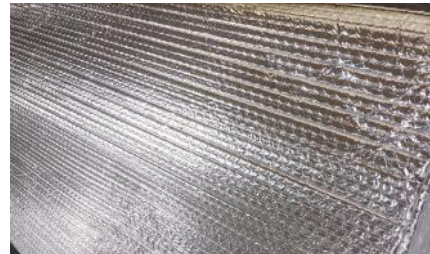
**BBA STEREO FOR SPATOUCH**



**BLUETOOTH STEREO SYSTEM**



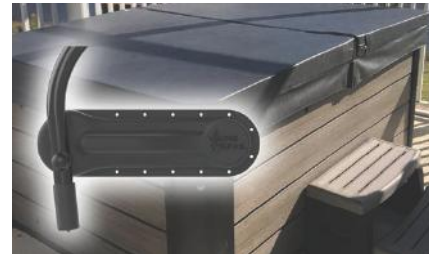
**STANDARD STEP**



**REFLECTIX INSULATION**



**FOAM BOARD INSULATION**



**COVER LIFTER**

# WARRANTY

## LIMITED LIFETIME Spa Shell Warranty

Viking warrants against the loss of water through the shell caused by defects in materials and workmanship for as long as you own the spa. The warranty described in this paragraph does not cover: (a) variances in the shell surface (these are a natural result of the compound mixture and do not compromise the structural stability of the shell); (b) minor blemishes or scratches; or (c) cosmetic color and surface texture changes due to normal use. Viking may change the availability of the warranty described in this paragraph at its discretion.

## 5-YEAR Cabinet Warranty

Viking warrants the cabinet panels and corners to be free from defects in materials and workmanship for a period of five years. Fading and weathering of the cabinet will occur naturally over time and are not considered defects. The warranty described in this paragraph does not cover damage to the cabinet due to improperly installed cover lifters (including lack of proper support for lifter components).

## 3-YEAR Limited Component Warranty

Viking warrants all factory-installed electrical equipment and plumbing components to be free from defects in materials and workmanship for a period of three years. "Electrical equipment and plumbing components" means the pump(s), heater, control system, jet fittings, filter assembly, internal plumbing, internal glue joints, and hoses.

## 1-Year Ozone System Warranty

Viking warrants the factory-installed ozone system to be free from defects in materials and workmanship for a period of one year.

## 1-Year LED Light Assembly Warranty

Viking warrants the factory-installed interior LED light assembly to be free from defects in materials and workmanship for a period of one year.

## 1-Year Audio System Warranty

Viking warrants the factory-installed audio system to be free from defects in materials and workmanship for a period of one year.

## 1-Year Spa Cover Warranty

Viking warrants the spa cover to be free from defects in materials and workmanship for a period of one year.

\*SCAN THE QR CODE BELOW OR  
VISIT [WWW.VIKINGSPAS.COM](http://WWW.VIKINGSPAS.COM)  
FOR FULL AND COMPLETE  
WARRANTY DETAILS



# OUR PARTNERS

Relationships are important to us, and our network of independent dealers are some of the largest and best retailers in the world. Just like us, they are dedicated to providing exceptional customer service and quality products.



We are proud that all Viking Spa hot tubs are built in West Michigan and sold around the world.

# OUR SUPPLIERS

Rest assured that all the materials and components used to make a Viking Spa hot tub come from the leading suppliers in our industry. They are committed to providing the highest quality parts.



2725 PRAIRIE STREET SW • WYOMING • MICHIGAN • 49519  
(616) 248-7800 • [www.vikingspas.com](http://www.vikingspas.com) • [info@vikingspas.com](mailto:info@vikingspas.com)

Viking Spas provides product information, including technical information and specifications for the customer's convenience in the selection of products and options. The accuracy or completeness of this product information is not guaranteed and is subject to change without notice.